

\$245,000 - 212 15499 Castle Downs Road, Edmonton

MLS® #E4419529

\$245,000

1 Bedroom, 2.00 Bathroom, 1,186 sqft

Condo / Townhouse on 0.00 Acres

Beaumaris, Edmonton, AB

Fully Renovated 1-Bedroom + Den with Lake Views!! Discover modern lakeside living in this beautifully updated 1-bedroom, 2-bathroom unit at Beaumaris on the Lake. Situated on the 2nd floor, it offers stunning views of Lake Beaumaris and direct access to the scenic lakefront trail. Close to shopping, medical services, public transit, and the YMCA, convenience is at your doorstep. The fully renovated unit features modern colors, new lighting, and a gorgeous kitchen with custom pullout cabinets, quartz countertops, and under-cabinet lighting. Relax in the spacious living room with a gas fireplace, or enjoy the large balcony overlooking the gardens and lake. Amenities include an indoor pool, hot tub, fitness room, party room, gazebo, and security features. This 18+ pet-free building offers a quiet retreat. Condo fees include gas and water, and the unit comes with a powered parking stall and visitor parking. Don't miss this rare opportunity for stylish, low-maintenance lakeside living!

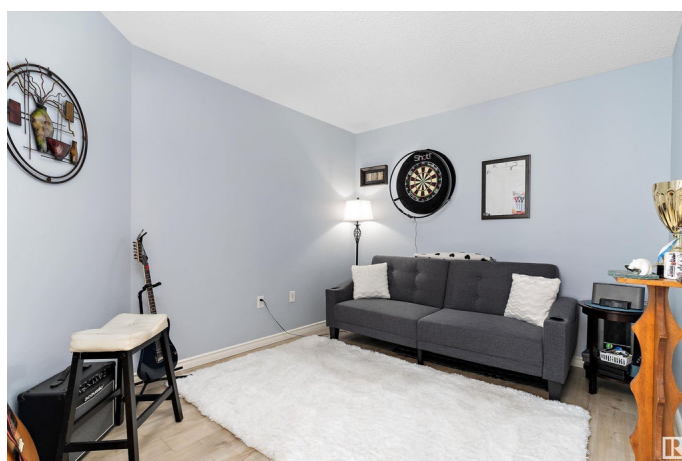
Built in 1992

Essential Information

MLS® # E4419529

Price \$245,000

Bedrooms 1



Bathrooms	2.00
Full Baths	2
Square Footage	1,186
Acres	0.00
Year Built	1992
Type	Condo / Townhouse
Sub-Type	Lowrise Apartment
Style	Single Level Apartment
Status	Active

Community Information

Address	212 15499 Castle Downs Road
Area	Edmonton
Subdivision	Beaumaris
City	Edmonton
County	ALBERTA
Province	AB
Postal Code	T5X 5Y3

Amenities

Amenities	Deck, Detectors Smoke, Exercise Room, Gazebo, Guest Suite, No Animal Home, No Smoking Home, Parking-Visitor, Party Room, Pool-Indoor, Security Door, Social Rooms, Storage-In-Suite
Parking	Stall
Is Waterfront	Yes
Has Pool	Yes

Interior

Interior Features	ensuite bathroom
Appliances	Dishwasher-Built-In, Dryer, Refrigerator, Stove-Electric, Washer
Heating	Hot Water, Natural Gas
Fireplace	Yes
Fireplaces	Tile Surround
# of Stories	4
Stories	1
Has Basement	Yes
Basement	None, No Basement

Exterior

Exterior	Wood, Stucco
Exterior Features	Backs Onto Lake, Fenced, Gated Community, Landscaped, Picnic Area, Playground Nearby, Public Transportation, Shopping Nearby, View Lake
Roof	Asphalt Shingles
Construction	Wood, Stucco
Foundation	Concrete Perimeter

Additional Information

Date Listed	January 29th, 2025
Days on Market	102
Zoning	Zone 27
Condo Fee	\$616

DATA IS DEEMED RELIABLE BUT IS NOT GUARANTEED ACCURATE BY THE REALTORS® ASSOCIATION OF EDMONTON. COPYRIGHT 2025 BY THE REALTORS® ASSOCIATION OF EDMONTON. ALL RIGHTS RESERVED. Trademarks are owned or controlled by the Canadian Real Estate Association (CREA) and identify real estate professionals who are members of CREA (REALTOR®, REALTORS®) and/or the quality of services they provide (MLS®, Multiple Listing Service®)

Listing information last updated on May 11th, 2025 at 9:02pm MDT