

\$769,900 - 224 Lee Ridge Road, Edmonton

MLS® #E4421111

\$769,900

7 Bedroom, 4.00 Bathroom, 1,581 sqft
Single Family on 0.00 Acres

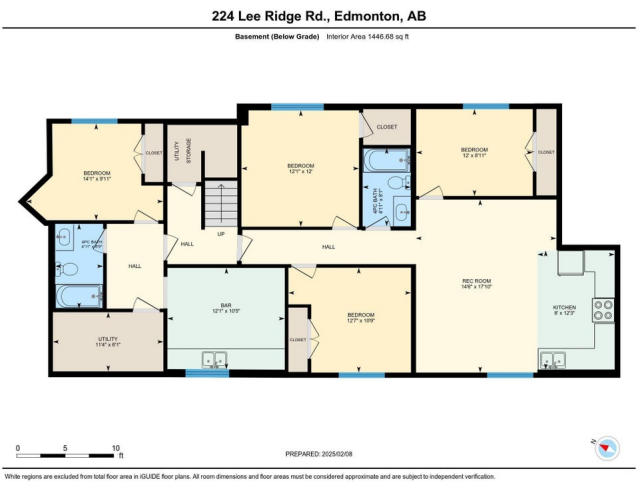
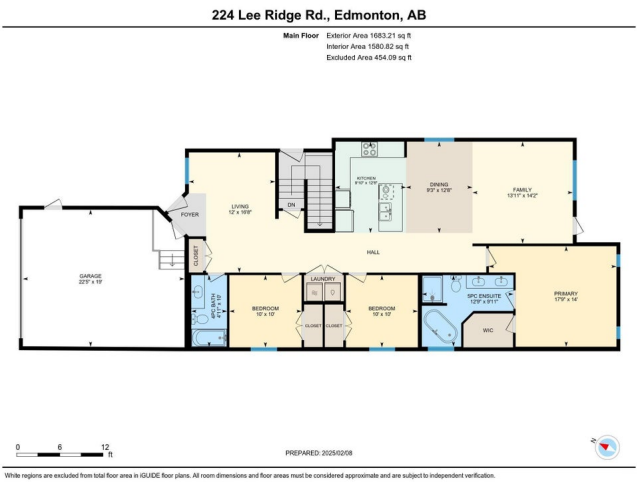
Lee Ridge, Edmonton, AB

Bring your offers! MOTIVATED SELLER.
Brand New Bungalow with over 3000 sqft of nicely designed living spaces with 3 separate kitchens, legal suite and an in-law suite, this home offers unmatched flexibility and potential for a large and growing family or potential rental income from it's 3 separate areas!
1580+ sqft above grade and 1,446+ sqft below grade. GST included in asking price. 7 bedrooms and 4 bathrooms, 1 laundry per floor, 9' Ceilings on the main floor and almost 10' ceilings on the lower level, Quartz countertops and sleek vinyl plank flooring, 2 furnaces, instant hot water, separate side entrance, double garage. Make this extraordinary property your new home or your new passive income investment. The neighbourhood has been recently rezoned to RS.

Built in 2024

Essential Information

MLS® #	E4421111
Price	\$769,900
Bedrooms	7
Bathrooms	4.00
Full Baths	4
Square Footage	1,581
Acres	0.00



Year Built	2024
Type	Single Family
Sub-Type	Detached Single Family
Style	Bungalow
Status	Active

Community Information

Address	224 Lee Ridge Road
Area	Edmonton
Subdivision	Lee Ridge
City	Edmonton
County	ALBERTA
Province	AB
Postal Code	T6K 0N3

Amenities

Amenities	Ceiling 10 ft., Ceiling 9 ft., Hot Water Instant, No Animal Home, No Smoking Home, Vinyl Windows
Parking Spaces	6
Parking	Double Garage Attached, Parking Pad Cement/Paved

Interior

Interior Features	ensuite bathroom
Appliances	Hood Fan, Oven-Built-In, Oven-Microwave, Stove-Countertop Electric
Heating	Forced Air-2, Natural Gas
Stories	2
Has Suite	Yes
Has Basement	Yes
Basement	Full, Finished

Exterior

Exterior	Wood, Vinyl
Exterior Features	Flat Site, No Back Lane, Public Transportation, Schools, Shopping Nearby
Roof	Asphalt Shingles
Construction	Wood, Vinyl
Foundation	Concrete Perimeter

School Information

Elementary	Lee Ridge School
Middle	Kate Chegwin
High	J. Percy Page

Additional Information

Date Listed	February 11th, 2025
Days on Market	92
Zoning	Zone 29

DATA IS DEEMED RELIABLE BUT IS NOT GUARANTEED ACCURATE BY THE REALTORS® ASSOCIATION OF EDMONTON. COPYRIGHT 2025 BY THE REALTORS® ASSOCIATION OF EDMONTON. ALL RIGHTS RESERVED. Trademarks are owned or controlled by the Canadian Real Estate Association (CREA) and identify real estate professionals who are members of CREA (REALTOR®, REALTORS®) and/or the quality of services they provide (MLS®, Multiple Listing Service®)

Listing information last updated on May 14th, 2025 at 9:47am MDT