

\$126,500 - N/A, Edmonton

MLS® #E4421497

\$126,500

1 Bedroom, 1.00 Bathroom, 644 sqft

Condo / Townhouse on 0.00 Acres

Pollard Meadows, Edmonton, AB

GORGEOUS BRIGHT TOP FLOOR UNIT!

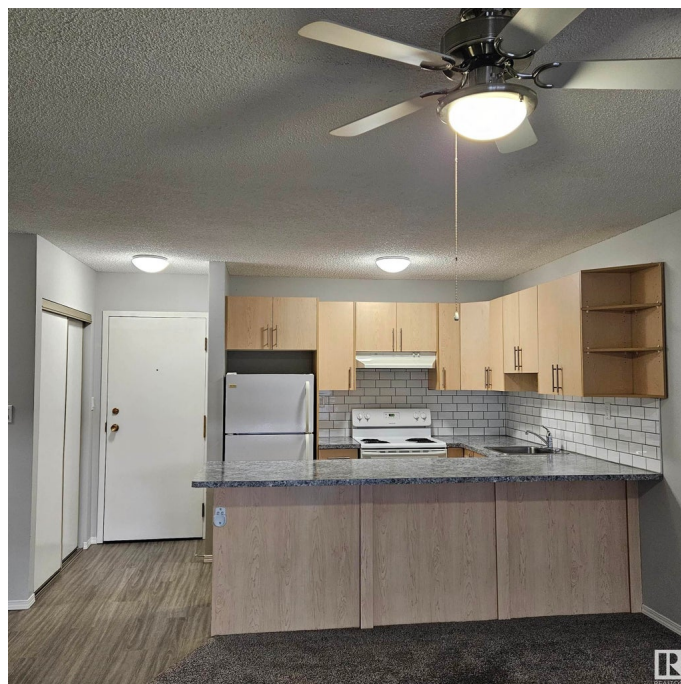
This one-bedroom, one-bathroom suite is ideally located in Millwoods Terrace. Completely renovated a few years ago, this unit received new counters, cabinets, doors & flooring. This unit has a huge open California-style kitchen looking into the living room. The suite also has a spacious screen-enclosed balcony & a large in-suite storage room. The building has an elevator & laundry facilities are located on the same floor.

Easy access to the Anthony Henday. Close to all amenities: public library, rec centre, shopping, transit, schools, hospitals & parks - don't miss out on this great opportunity !

Built in 1981

Essential Information

MLS® #	E4421497
Price	\$126,500
Bedrooms	1
Bathrooms	1.00
Full Baths	1
Square Footage	644
Acres	0.00
Year Built	1981
Type	Condo / Townhouse
Sub-Type	Lowrise Apartment



Style	Single Level Apartment
Status	Active

Community Information

Address	N/A
Area	Edmonton
Subdivision	Pollard Meadows
City	Edmonton
County	ALBERTA
Province	AB
Postal Code	T6L 5P2

Amenities

Amenities	Insulation-Upgraded, Parking-Plug-Ins, Parking-Visitor, Patio, Security Door, Storage-In-Suite, Vinyl Windows
Parking	Stall

Interior

Appliances	Dishwasher-Built-In, Fan-Ceiling, Hood Fan, Refrigerator, Stove-Electric, Window Coverings
Heating	Hot Water, Natural Gas
# of Stories	4
Stories	1
Has Basement	Yes
Basement	None, No Basement

Exterior

Exterior	Wood, Stucco
Exterior Features	Golf Nearby, Low Maintenance Landscape, Playground Nearby, Public Transportation, Schools, Shopping Nearby
Roof	Asphalt Shingles
Construction	Wood, Stucco
Foundation	Concrete Perimeter

School Information

Elementary	Pollard Meadows
Middle	TD Baker
High	J Percy

Additional Information

Date Listed February 12th, 2025
Days on Market 90
Zoning Zone 29
Condo Fee \$362



DATA IS DEEMED RELIABLE BUT IS NOT GUARANTEED ACCURATE BY THE REALTORS® ASSOCIATION OF EDMONTON. COPYRIGHT 2025 BY THE REALTORS® ASSOCIATION OF EDMONTON. ALL RIGHTS RESERVED. Trademarks are owned or controlled by the Canadian Real Estate Association (CREA) and identify real estate professionals who are members of CREA (REALTOR®, REALTORS®) and/or the quality of services they provide (MLS®, Multiple Listing Service®)
Listing information last updated on May 14th, 2025 at 6:32am MDT