

\$1,787,000 - 11933 Jasper Avenue, Edmonton

MLS® #E4432521

\$1,787,000

4 Bedroom, 2.50 Bathroom, 5,385 sqft
Condo / Townhouse on 0.00 Acres

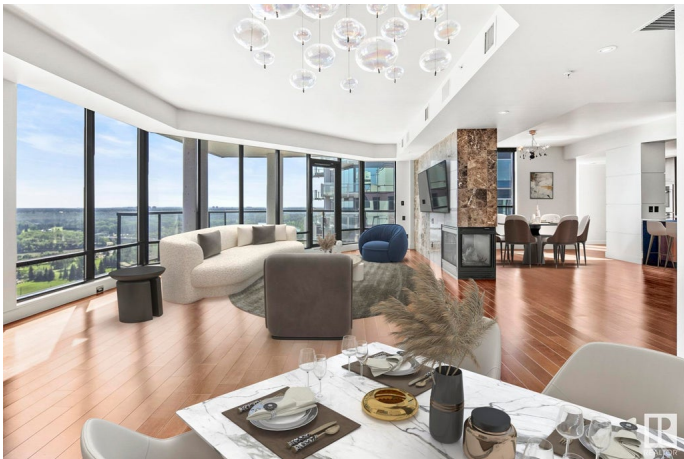
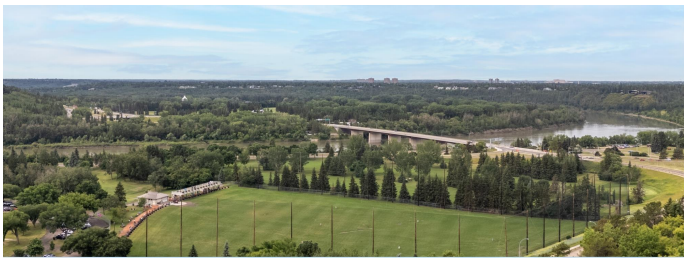
W–h–k–w–a–n–t–win, Edmonton, AB

Elevate your lifestyle in Edmonton's Illuminada II penthouse, occupying the entire top floor with stunning views where the eye skips delighted over the verdant expanse of the Edmonton River Valley. This glamorous residence offers unparalleled scale and style. Accessed by exclusive elevators, the private entrance foyer opens into a magnificent living room, complemented by stunning vistas from ever angle. Currently configured with 4 bedrooms, the flexible floor plan invites endless possibilities. Enjoy entertaining in the open-concept space, featuring a marble-encased fireplace and a gourmet kitchen with Sub-Zero, Wolf, Miele appliances. With a master suite oasis and the convenience of four titled parking stalls, this penthouse epitomizes luxury living at its finest. *some photos are virtually staged*

Built in 2006

Essential Information

MLS® #	E4432521
Price	\$1,787,000
Bedrooms	4
Bathrooms	2.50
Full Baths	2
Half Baths	1
Square Footage	5,385



Acres	0.00
Year Built	2006
Type	Condo / Townhouse
Sub-Type	Apartment High Rise
Style	Penthouse
Status	Active

Community Information

Address	11933 Jasper Avenue
Area	Edmonton
Subdivision	W&hkw&ant&win
City	Edmonton
County	ALBERTA
Province	AB
Postal Code	T5K 0P1

Amenities

Amenities	On Street Parking, Air Conditioner, Closet Organizers, Detectors Smoke, Intercom, No Smoking Home, Parking-Extra, Parking-Visitor, Patio, Secured Parking, Security Door, Social Rooms, Sprinkler System-Fire, Storage-In-Suite, Storage-Locker Room, Vaulted Ceiling
Parking Spaces	4
Parking	Heated, Parkade, Underground

Interior

Interior Features	ensuite bathroom
Appliances	Air Conditioning-Central, Dishwasher-Built-In, Dryer, Freezer, Garage Opener, Hood Fan, Oven-Microwave, Refrigerator, Stove-Countertop Gas, Washer, Window Coverings, Oven Built-In-Two
Heating	Heat Pump, Natural Gas
Fireplace	Yes
Fireplaces	Stone Facing
# of Stories	12
Stories	1
Has Basement	Yes
Basement	None, No Basement

Exterior

Exterior	Concrete, Brick, Stucco
Exterior Features	Golf Nearby, Private Setting, Public Transportation, River Valley View,

River View, Shopping Nearby, View City, View Downtown

Roof	Tar & Gravel
Construction	Concrete, Brick, Stucco
Foundation	Concrete Perimeter

Additional Information

Date Listed	April 24th, 2025
Days on Market	17
Zoning	Zone 12
Condo Fee	\$3,055

DATA IS DEEMED RELIABLE BUT IS NOT GUARANTEED ACCURATE BY THE REALTORS® ASSOCIATION OF EDMONTON. COPYRIGHT 2025 BY THE REALTORS® ASSOCIATION OF EDMONTON. ALL RIGHTS RESERVED. Trademarks are owned or controlled by the Canadian Real Estate Association (CREA) and identify real estate professionals who are members of CREA (REALTOR®, REALTORS®) and/or the quality of services they provide (MLS®, Multiple Listing Service®)

Listing information last updated on May 11th, 2025 at 12:47am MDT