

\$175,000 - 1401 12121 Jasper Avenue, Edmonton

MLS® #E4433038

\$175,000

1 Bedroom, 1.00 Bathroom, 719 sqft

Condo / Townhouse on 0.00 Acres

WÃ@hkwÃªntÃ´win, Edmonton, AB

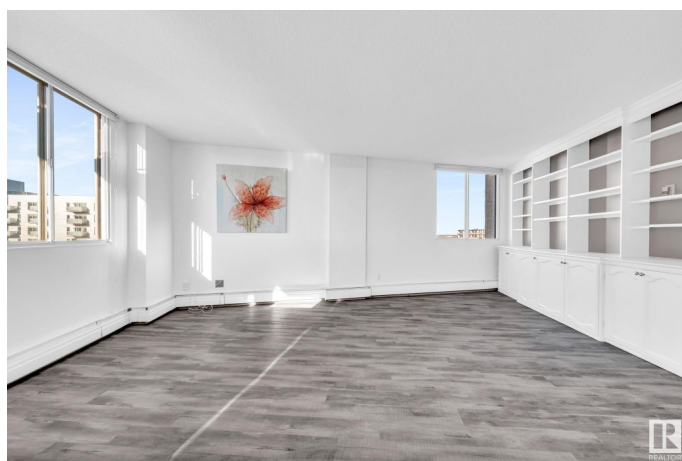
"Top Of The Valley" apartment tower offers views of The Victoria Golf Course & The North Saskatchewan River Valley. A quick walk to the Victoria Promenade and easy access to downtown conveniences like shopping, dining, medical offices and public transportation!

On-site property management, renovated gym w/views, Free laundry room access on P1 for residents, social room & library w/balcony, Canada Post boxes. Community garden area. Professionally renovated. w/ built in wood cabinetry. Heated, secured parkade w/Titled parking stall. Semi-private balcony via patio doors just off the dining area. Savour your morning coffee & watch the sunrise and sunset or count the stars at night! Enjoy the million dollar views from the 14th floor! \$4000.00 new levy to be paid in full by seller.

Built in 1975

Essential Information

MLS® #	E4433038
Price	\$175,000
Bedrooms	1
Bathrooms	1.00
Full Baths	1
Square Footage	719
Acres	0.00
Year Built	1975



Type	Condo / Townhouse
Sub-Type	Apartment High Rise
Style	Single Level Apartment
Status	Active

Community Information

Address	1401 12121 Jasper Avenue
Area	Edmonton
Subdivision	WÃ©hkwÃ©ntÃ©win
City	Edmonton
County	ALBERTA
Province	AB
Postal Code	T5N 3X7

Amenities

Amenities	Off Street Parking, Carbon Monoxide Detectors, Deck, Detectors Smoke, Intercom, No Animal Home, No Smoking Home, Parking-Visitor, Party Room, Patio, Smart/Program. Thermostat, Secured Parking, Security Door, Social Rooms, Storage-In-Suite, Wall Unit-Built-In
Parking	Insulated, Parkade

Interior

Appliances	Dishwasher-Built-In, Hood Fan, Intercom, Refrigerator, Stove-Electric, Window Coverings
Heating	Baseboard, Hot Water, Water
# of Stories	17
Stories	1
Has Basement	Yes
Basement	None, No Basement

Exterior

Exterior	Concrete, Stucco
Exterior Features	Backs Onto Park/Trees, Flat Site, Fruit Trees/Shrubs, Golf Nearby, Hillside, Landscaped, Low Maintenance Landscape, Picnic Area, Public Transportation, River Valley View, Shopping Nearby, View City, View Downtown
Roof	Unknown
Construction	Concrete, Stucco
Foundation	Concrete Perimeter

Additional Information

Date Listed	April 26th, 2025
Days on Market	17
Zoning	Zone 12
Condo Fee	\$655

DATA IS DEEMED RELIABLE BUT IS NOT GUARANTEED ACCURATE BY THE REALTORS® ASSOCIATION OF EDMONTON. COPYRIGHT 2025 BY THE REALTORS® ASSOCIATION OF EDMONTON. ALL RIGHTS RESERVED. Trademarks are owned or controlled by the Canadian Real Estate Association (CREA) and identify real estate professionals who are members of CREA (REALTOR®, REALTORS®) and/or the quality of services they provide (MLS®, Multiple Listing Service®)

Listing information last updated on May 12th, 2025 at 10:32pm MDT