

\$539,900 - 4113 157a Avenue, Edmonton

MLS® #E4434033

\$539,900

4 Bedroom, 3.50 Bathroom, 2,218 sqft

Single Family on 0.00 Acres

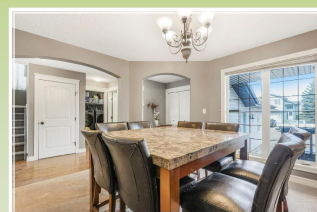
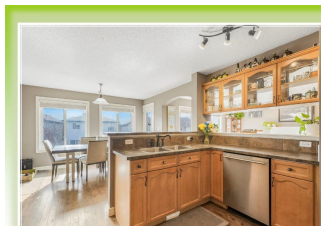
Brintnell, Edmonton, AB

3,178 Sq. Ft. of Finished Living Space in Brintnell â€“ WALKOUT BASEMENT & PRIME LOCATION! This 2 story home features 3+1 bedrooms, 3.5 baths, and is just 1/2 block from the park. Offering a fantastic blend of space, functionality, and convenience. The main floor comprises a large living room with a cozy gas fireplace, and a kitchen filled with cabinetry, corner pantry, and eating barâ€“perfect for entertaining. A formal dining room provides flexibility and can easily function as an office or den. Upstairs, enjoy an oversized bonus room, a primary bedroom with walk-in closet and ensuite bath with corner soaker tub. Two additional bedrooms and full bath complete this level. The walkout basement with its separate entrance, living area, 4th bedroom & full bath - could be perfect for multi-generational living! This expansive home offers plenty of room to grow. Most recent improvements: sump pump (Apr. 2025) + furnace motor & circuit board in 2024.

Built in 2005

Essential Information

MLS® #	E4434033
Price	\$539,900
Bedrooms	4
Bathrooms	3.50



2 STOREY WALK-OUT IN BRINTNELL



Full Baths	3
Half Baths	1
Square Footage	2,218
Acres	0.00
Year Built	2005
Type	Single Family
Sub-Type	Detached Single Family
Style	2 Storey
Status	Active

Community Information

Address	4113 157a Avenue
Area	Edmonton
Subdivision	Brintnell
City	Edmonton
County	ALBERTA
Province	AB
Postal Code	T5Y 0A4

Amenities

Amenities	Deck, Walkout Basement
Parking Spaces	4
Parking	Double Garage Attached

Interior

Interior Features	ensuite bathroom
Appliances	Dishwasher-Built-In, Garage Oven-Microwave, Refrigerator Attachments, Vacuum System
Heating	Forced Air-1, Natural Gas
Fireplace	Yes
Fireplaces	Mantel
Stories	3
Has Basement	Yes
Basement	Full, Finished

Exterior

Exterior	Wood, Stone, Vinyl
Exterior Features	Fenced, Landscaped, No Back Lane, Playground Nearby, Public



	Transportation, Schools, Sho
Roof	Asphalt Shingles
Construction	Wood, Stone, Vinyl
Foundation	Concrete Perimeter

Additional Information

Date Listed	May 2nd, 2025
Days on Market	13
Zoning	Zone 03



DATA IS DEEMED RELIABLE BUT IS NOT GUARANTEED ACCURATE BY THE REALTORS® ASSOCIATION OF EDMONTON. COPYRIGHT 2025 BY THE REALTORS® ASSOCIATION OF EDMONTON. ALL RIGHTS RESERVED. Trademarks are owned or controlled by the Canadian Real Estate Association (CREA) and identify real estate professionals who are members of CREA (REALTOR®, REALTORS®) and/or the quality of services they provide (MLS®, Multiple Listing Service®)

Listing information last updated on May 15th, 2025 at 10:18am MDT