

\$224,900 - 224 12025 22 Avenue, Edmonton

MLS® #E4434399

\$224,900

2 Bedroom, 2.00 Bathroom, 968 sqft

Condo / Townhouse on 0.00 Acres

Heritage Valley Town Centre Area, Edmonton, AB

CORNER UNIT!!! 2 spacious bedrooms, office space, oversized living room. In suite laundry, 1 underground parking. All walls, doors, and trims are freshly painted. Prime location in Rutherford, close to shops, grocery shopping, restaurants. Mins to Henday and HWY 2.

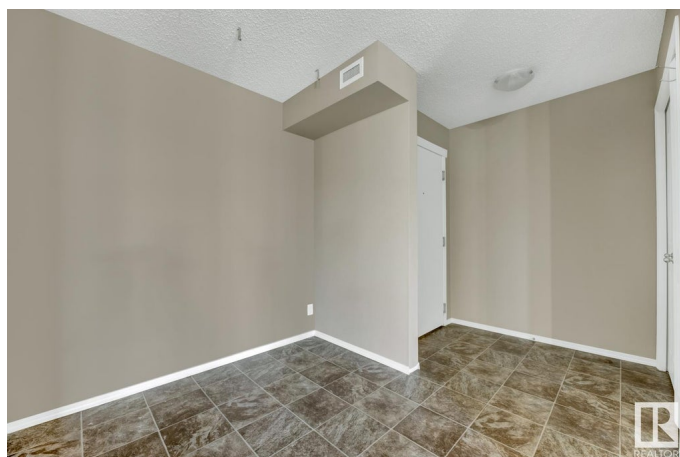
Built in 2014

Essential Information

| | |
|----------------|-----------------------|
| MLS® # | E4434399 |
| Price | \$224,900 |
| Bedrooms | 2 |
| Bathrooms | 2.00 |
| Full Baths | 2 |
| Square Footage | 968 |
| Acres | 0.00 |
| Year Built | 2014 |
| Type | Condo / Townhouse |
| Sub-Type | Lowrise Apartment |
| Style | Multi Level Apartment |
| Status | Active |

Community Information

| | |
|-------------|----------------------------------|
| Address | 224 12025 22 Avenue |
| Area | Edmonton |
| Subdivision | Heritage Valley Town Centre Area |



| | |
|-------------|----------|
| City | Edmonton |
| County | ALBERTA |
| Province | AB |
| Postal Code | T6W 2Y1 |

Amenities

| | |
|-----------|---------------------------|
| Amenities | Intercom, Parking-Visitor |
| Parking | Underground |

Interior

| | |
|-------------------|---|
| Interior Features | ensuite bathroom |
| Appliances | Dishwasher-Built-In, Dryer, Microwave Hood Fan, Oven-Built-In, Refrigerator, Stove-Electric |
| Heating | Baseboard, Electric |
| # of Stories | 4 |
| Stories | 1 |
| Has Basement | Yes |
| Basement | None, No Basement |

Exterior

| | |
|-------------------|---------------------------------|
| Exterior | Wood, Vinyl |
| Exterior Features | Airport Nearby, Shopping Nearby |
| Roof | Vinyl Shingles |
| Construction | Wood, Vinyl |
| Foundation | Concrete Perimeter |

Additional Information

| | |
|----------------|---------------|
| Date Listed | May 3rd, 2025 |
| Days on Market | 12 |
| Zoning | Zone 55 |
| Condo Fee | \$570 |

DATA IS DEEMED RELIABLE BUT IS NOT GUARANTEED ACCURATE BY THE REALTORS® ASSOCIATION OF EDMONTON. COPYRIGHT 2025 BY THE REALTORS® ASSOCIATION OF EDMONTON. ALL RIGHTS RESERVED. Trademarks are owned or controlled by the Canadian Real Estate Association (CREA) and identify real estate professionals who are members of CREA (REALTOR®, REALTORS®) and/or the quality of services they provide (MLS®, Multiple Listing Service®)

Listing information last updated on May 15th, 2025 at 6:02pm MDT