

\$329,900 - N/A, Edmonton

MLS® #E4434787

\$329,900

3 Bedroom, 2.50 Bathroom, 1,219 sqft
Condo / Townhouse on 0.00 Acres

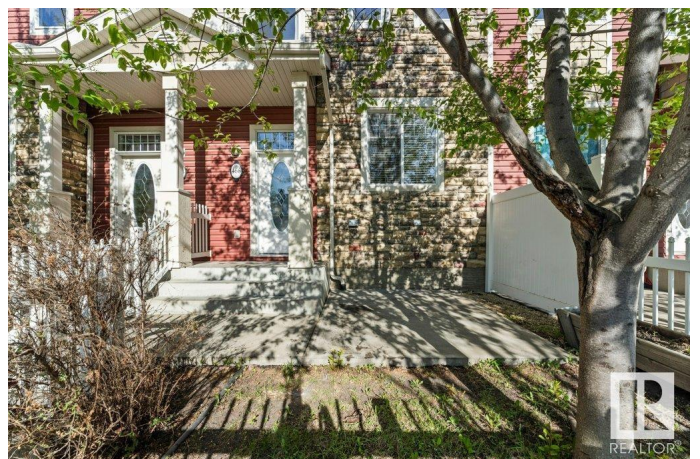
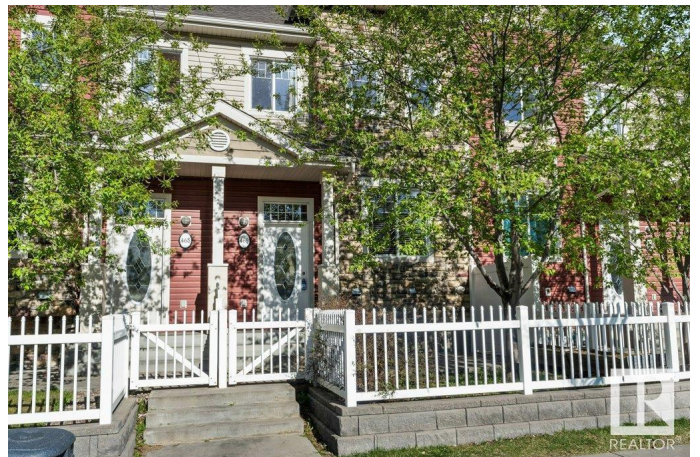
The Hamptons, Edmonton, AB

Welcome to the perfect affordable family home in one of the best high-end complexes in West Edmonton! Relax in the Bright and open concept living space that was highly upgraded when built & one of the largest open concept units! The kitchen will impress with Stainless Steel Appliances & modern white quartz counters & tons of counter space with great peninsula bar seating! Upstairs reveals a perfect 3 Bedroom layout including a large master with Walk In Closet and Full Ensuite plus two additional bedrooms and another full bathroom! Enjoy a rare fenced yard with patio space and grass area - perfect for your kids or pets! All of this plus a great double attached garage with amazing streetscape views with beautiful mature trees for those patio evenings. The Hamptons is one of West Edmonton's best family communities with easy access to The Henday, Parks, New Schools, & amazing shopping options & walking trails! Move In Ready with an Immediate Possession Available!

Built in 2011

Essential Information

MLS® #	E4434787
Price	\$329,900
Bedrooms	3



Bathrooms	2.50
Full Baths	2
Half Baths	1
Square Footage	1,219
Acres	0.00
Year Built	2011
Type	Condo / Townhouse
Sub-Type	Townhouse
Style	2 Storey
Status	Active

Community Information

Address	N/A
Area	Edmonton
Subdivision	The Hamptons
City	Edmonton
County	ALBERTA
Province	AB
Postal Code	T6M 0M5

Amenities

Amenities	On Street Parking, Parking-Visitor, Vinyl Windows
Parking Spaces	2
Parking	Double Garage Attached

Interior

Interior Features	ensuite bathroom
Appliances	Dishwasher-Built-In, Dryer, Garage Control, Garage Opener, Microwave Hood Fan, Refrigerator, Stove-Electric, Washer
Heating	Forced Air-1, Natural Gas
Stories	2
Has Basement	Yes
Basement	Partial, Unfinished

Exterior

Exterior	Wood, Stone, Vinyl
Exterior Features	Fenced, Fruit Trees/Shrubs, Landscaped, No Through Road, Paved Lane, Playground Nearby, Public Transportation, Schools, Shopping Nearby

Roof	Asphalt Shingles
Construction	Wood, Stone, Vinyl
Foundation	Concrete Perimeter

School Information

Elementary	Bessie Nichols k-6
Middle	Bessie Nichols 7-9
High	Jasper Place 10-12

Additional Information

Date Listed	May 6th, 2025
Days on Market	9
Zoning	Zone 58
HOA Fees	183.75
HOA Fees Freq.	Annually
Condo Fee	\$246

DATA IS DEEMED RELIABLE BUT IS NOT GUARANTEED ACCURATE BY THE REALTORS® ASSOCIATION OF EDMONTON. COPYRIGHT 2025 BY THE REALTORS® ASSOCIATION OF EDMONTON. ALL RIGHTS RESERVED. Trademarks are owned or controlled by the Canadian Real Estate Association (CREA) and identify real estate professionals who are members of CREA (REALTOR®, REALTORS®) and/or the quality of services they provide (MLS®, Multiple Listing Service®)

Listing information last updated on May 15th, 2025 at 11:32am MDT