

## \$450,000 - 1750 Chapman Way, Edmonton

MLS® #E4435177

**\$450,000**

3 Bedroom, 2.50 Bathroom, 1,788 sqft

Single Family on 0.00 Acres

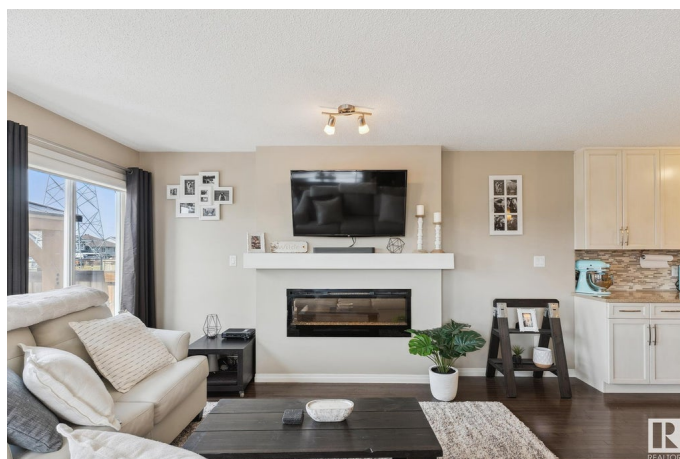
Chappelle Area, Edmonton, AB

Set on a corner lot with a massive yard, this 3-bedroom, 2.5-bath home offers over 1788 sqft of living space not including the basement. Inside, youâ€™ll find an open-concept modern kitchen with granite counters, an 8-foot island, and an electric fireplace that adds a relaxed vibe to the living room. Upstairs includes a versatile bonus room, laundry room, and a spacious primary suite with double doors. Douglas Hunter drapes and blinds finish every window. Outside, enjoy a fully fenced yard, pergola over a concrete patio extension, and a deck made for unwinding. Freshly painted and turn key ready! Close to parks and schoolsâ€”just the way you want it.

Built in 2013

### Essential Information

MLS® #	E4435177
Price	\$450,000
Bedrooms	3
Bathrooms	2.50
Full Baths	2
Half Baths	1
Square Footage	1,788
Acres	0.00
Year Built	2013
Type	Single Family



Sub-Type	Half Duplex
Style	2 Storey
Status	Active

### Community Information

Address	1750 Chapman Way
Area	Edmonton
Subdivision	Chappelle Area
City	Edmonton
County	ALBERTA
Province	AB
Postal Code	T6W 2E8

### Amenities

Amenities	Air Conditioner
Parking	Single Garage Attached

### Interior

Interior Features	ensuite bathroom
Appliances	Dishwasher-Built-In, Dryer, Garage Control, Garage Opener, Microwave Hood Fan, Refrigerator, Stove-Electric, Washer, Window Coverings
Heating	Forced Air-1, Natural Gas
Fireplaces	Insert
Stories	2
Has Basement	Yes
Basement	Full, Unfinished

### Exterior

Exterior	Wood, Stucco, Vinyl
Exterior Features	Corner Lot, Fenced, Landscaped
Roof	Asphalt Shingles
Construction	Wood, Stucco, Vinyl
Foundation	Concrete Perimeter

### Additional Information

Date Listed	May 8th, 2025
Days on Market	6
Zoning	Zone 55
HOA Fees	426

HOA Fees Freq.     Annually

DATA IS DEEMED RELIABLE BUT IS NOT GUARANTEED ACCURATE BY THE REALTORS® ASSOCIATION OF EDMONTON. COPYRIGHT 2025 BY THE REALTORS® ASSOCIATION OF EDMONTON. ALL RIGHTS RESERVED.Trademarks are owned or controlled by the Canadian Real Estate Association (CREA) and identify real estate professionals who are members of CREA (REALTOR®, REALTORS®) and/or the quality of services they provide (MLS®, Multiple Listing Service®)

Listing information last updated on May 14th, 2025 at 4:02pm MDT