

\$418,900 - 15640 92 Avenue, Edmonton

MLS® #E4435504

\$418,900

5 Bedroom, 2.00 Bathroom, 1,084 sqft

Single Family on 0.00 Acres

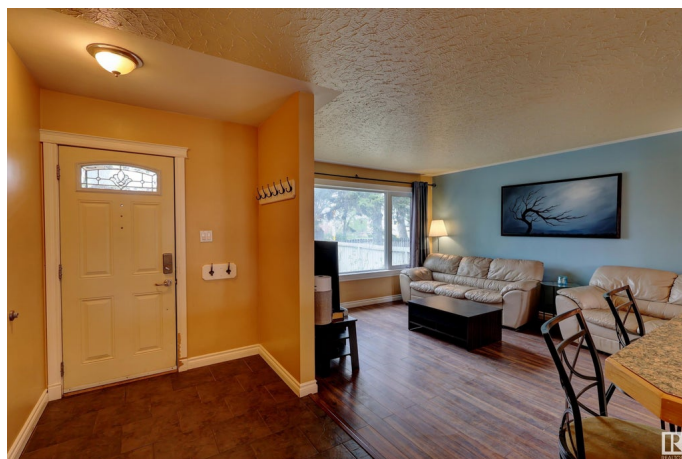
Meadowlark Park (Edmonton), Edmonton, AB

Move in ready Bungalow located in Meadowlark Park. Over 1000 sq ft bungalow located on main drive with easy access to public transportation. 60'x106' lot with front additional parking. Nice curb appeal. 3 + 2 bedrooms with two full bathrooms. Open living space. Upgrades through the years include siding and windows. Open kitchen with centre island overlooks living room. Basement fully developed (just needs a ceiling) with wood burning fireplace. Large fenced yard with garden box. Double detached garage separated as 1 bay as a work shop if desired. Close to 2 major high schools, shopping and the future LRT.

Built in 1958

Essential Information

MLS® #	E4435504
Price	\$418,900
Bedrooms	5
Bathrooms	2.00
Full Baths	2
Square Footage	1,084
Acres	0.00
Year Built	1958
Type	Single Family
Sub-Type	Detached Single Family



Style	Bungalow
Status	Active

Community Information

Address	15640 92 Avenue
Area	Edmonton
Subdivision	Meadowlark Park (Edmonton)
City	Edmonton
County	ALBERTA
Province	AB
Postal Code	T5R 5C4

Amenities

Amenities	See Remarks
Parking	Double Garage Detached

Interior

Interior Features	ensuite bathroom
Appliances	Dryer, Hood Fan, Refrigerator, Stove-Electric, Washer, Window Coverings
Heating	Forced Air-1, Natural Gas
Fireplace	Yes
Fireplaces	Brick Facing
Stories	2
Has Basement	Yes
Basement	Full, Finished

Exterior

Exterior	Wood, Vinyl
Exterior Features	Fenced, Public Transportation
Roof	Asphalt Shingles
Construction	Wood, Vinyl
Foundation	Concrete Perimeter

Additional Information

Date Listed	May 9th, 2025
Days on Market	1
Zoning	Zone 22

DATA IS DEEMED RELIABLE BUT IS NOT GUARANTEED ACCURATE BY THE REALTORS® ASSOCIATION OF

EDMONTON. COPYRIGHT 2025 BY THE REALTORS® ASSOCIATION OF EDMONTON. ALL RIGHTS RESERVED.Trademarks are owned or controlled by the Canadian Real Estate Association (CREA) and identify real estate professionals who are members of CREA (REALTOR®, REALTORS®) and/or the quality of services they provide (MLS®, Multiple Listing Service®)

Listing information last updated on May 9th, 2025 at 11:02pm MDT