

## \$214,900 - 127 Londonderry Square Square, Edmonton

MLS® #E4435550

**\$214,900**

3 Bedroom, 1.50 Bathroom, 1,167 sqft

Condo / Townhouse on 0.00 Acres

Kilkenny, Edmonton, AB

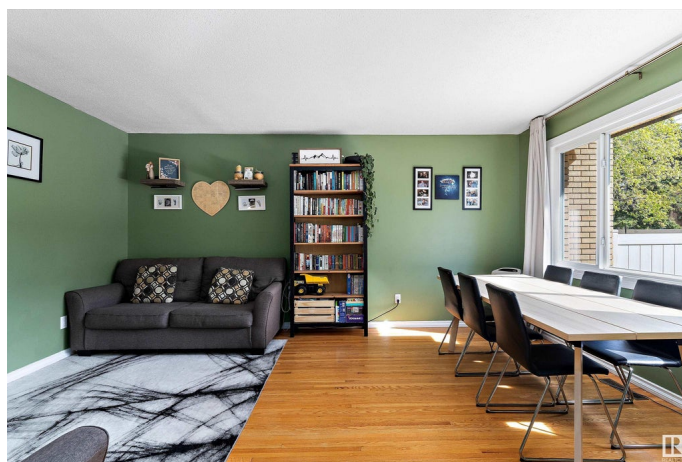
Build Your Legacy! With almost 1700 sqft of fully developed living space, this lovingly cared for 2 storey home blends comfort, style, and thoughtful updates. Step into a bright eat-in kitchen with white cabinetry, abundant natural light, and newer appliances including a fridge and dishwasher. Rich hardwood, laminate and ceramic tile floors run throughout, complemented by refreshed paint and updated lighting that create a welcoming atmosphere. The two bathrooms have been tastefully updated, while the second floor offers 3 spacious bedrooms with generous closets. Enjoy peace of mind with newer mechanicals, including a high-efficiency furnace, hot water on demand, water purification system, updated windows, as well as a newer washer and dryer in the fully finished basement. The east-facing fenced yard is a private retreat in a quiet, well-maintained complex—just steps from schools, parks, transit, recreation, and shopping, with easy access to the military base, Henday and the Yellowhead. Welcome Home!

Built in 1968

### Essential Information

MLS® # E4435550

Price \$214,900



Bedrooms	3
Bathrooms	1.50
Full Baths	1
Half Baths	1
Square Footage	1,167
Acres	0.00
Year Built	1968
Type	Condo / Townhouse
Sub-Type	Townhouse
Style	2 Storey
Status	Active

### Community Information

Address	127 Londonderry Square Square
Area	Edmonton
Subdivision	Kilkenny
City	Edmonton
County	ALBERTA
Province	AB
Postal Code	T5C 3C4

### Amenities

Amenities	Closet Organizers, Hot Water Instant, Hot Water Tankless, No Animal Home, No Smoking Home, Vinyl Windows
Parking	Stall

### Interior

Appliances	Dishwasher-Portable, Dryer, Refrigerator, Stove-Electric, Washer, Window Coverings
Heating	Forced Air-1, Natural Gas
Stories	3
Has Basement	Yes
Basement	Full, Finished

### Exterior

Exterior	Wood, Brick
Exterior Features	Fenced, Landscaped, Low Maintenance Landscape, Picnic Area, Playground Nearby, Public Transportation, Schools, Shopping Nearby
Roof	Asphalt Shingles

Construction	Wood, Brick
Foundation	Concrete Perimeter

**Additional Information**

Date Listed	May 9th, 2025
Days on Market	2
Zoning	Zone 02
Condo Fee	\$346

DATA IS DEEMED RELIABLE BUT IS NOT GUARANTEED ACCURATE BY THE REALTORS® ASSOCIATION OF EDMONTON. COPYRIGHT 2025 BY THE REALTORS® ASSOCIATION OF EDMONTON. ALL RIGHTS RESERVED.Trademarks are owned or controlled by the Canadian Real Estate Association (CREA) and identify real estate professionals who are members of CREA (REALTOR®, REALTORS®) and/or the quality of services they provide (MLS®, Multiple Listing Service®)

Listing information last updated on May 11th, 2025 at 6:17pm MDT