

\$419,000 - 2415 133 Avenue, Edmonton

MLS® #E4435643

\$419,000

3 Bedroom, 2.50 Bathroom, 1,673 sqft

Single Family on 0.00 Acres

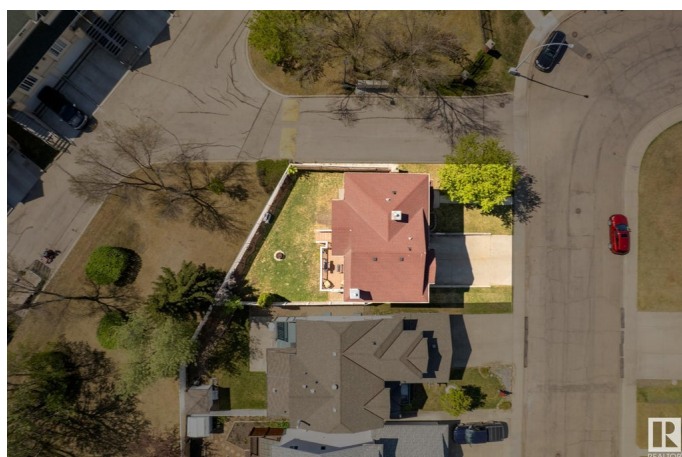
Kernohan, Edmonton, AB

Welcome to this charming home located in the desirable Kernohan community. Featuring 3 spacious bedrooms and 3 bathrooms. This home offers plenty of storage space throughout. The bright and open living room includes a cozy gas fireplace, while the open kitchen provides ample cupboard and counter space. Perfect for everyday living and entertaining. Enjoy year round comfort with central air conditioning (2018) and an updated furnace (2018). The fully fenced and landscaped yard adds plenty of space for outdoor enjoyment. Situated just minutes from Hermitage Park with off leash dog areas and scenic trails, and only minutes to shopping, the Claireview LRT, recreation facilities, Yellowhead Trail, and Anthony Henday. Quick possession is available. Ready to move in and make this your home.

Built in 1993

Essential Information

| | |
|----------------|-----------|
| MLS® # | E4435643 |
| Price | \$419,000 |
| Bedrooms | 3 |
| Bathrooms | 2.50 |
| Full Baths | 2 |
| Half Baths | 1 |
| Square Footage | 1,673 |



| | |
|------------|------------------------|
| Acres | 0.00 |
| Year Built | 1993 |
| Type | Single Family |
| Sub-Type | Detached Single Family |
| Style | 2 Storey |
| Status | Active |

Community Information

| | |
|-------------|-----------------|
| Address | 2415 133 Avenue |
| Area | Edmonton |
| Subdivision | Kernohan |
| City | Edmonton |
| County | ALBERTA |
| Province | AB |
| Postal Code | T5A 4Z9 |

Amenities

| | |
|-----------|---|
| Amenities | Air Conditioner, Deck, Detectors Smoke, Front Porch |
| Parking | Double Garage Attached |

Interior

| | |
|-------------------|---|
| Interior Features | ensuite bathroom |
| Appliances | Air Conditioning-Central, Dishwasher-Built-In, Dryer, Garage Control, Garage Opener, Microwave Hood Fan, Refrigerator, Stove-Electric, Washer, Window Coverings |
| Heating | Forced Air-1, Natural Gas |
| Fireplace | Yes |
| Fireplaces | Corner |
| Stories | 2 |
| Has Basement | Yes |
| Basement | Partial, See Remarks |

Exterior

| | |
|-------------------|--|
| Exterior | Wood, Vinyl |
| Exterior Features | Fenced, Landscaped, Playground Nearby, Shopping Nearby |
| Roof | Asphalt Shingles |
| Construction | Wood, Vinyl |
| Foundation | Concrete Perimeter |

Additional Information

Date Listed May 9th, 2025

Days on Market 4

Zoning Zone 35

DATA IS DEEMED RELIABLE BUT IS NOT GUARANTEED ACCURATE BY THE REALTORS® ASSOCIATION OF EDMONTON. COPYRIGHT 2025 BY THE REALTORS® ASSOCIATION OF EDMONTON. ALL RIGHTS RESERVED. Trademarks are owned or controlled by the Canadian Real Estate Association (CREA) and identify real estate professionals who are members of CREA (REALTOR®, REALTORS®) and/or the quality of services they provide (MLS®, Multiple Listing Service®)

Listing information last updated on May 13th, 2025 at 7:02pm MDT