

\$89,900 - 50 Sunset Harbour, Rural Wetaskiwin County

MLS® #E4440585

\$89,900

0 Bedroom, 0.00 Bathroom,

Rural on 0.16 Acres

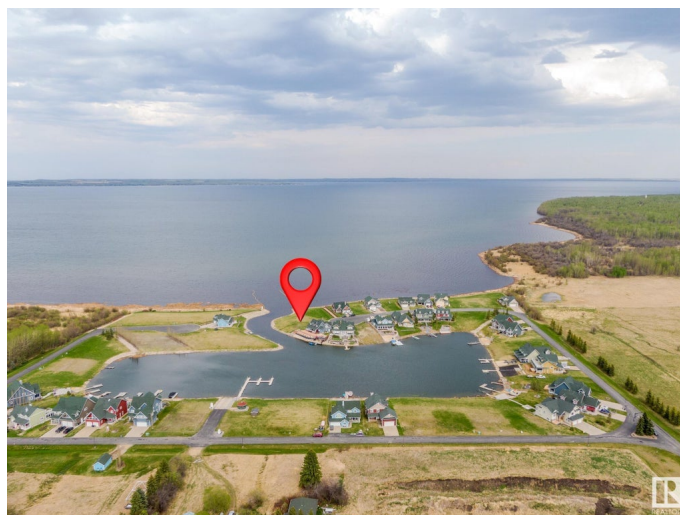
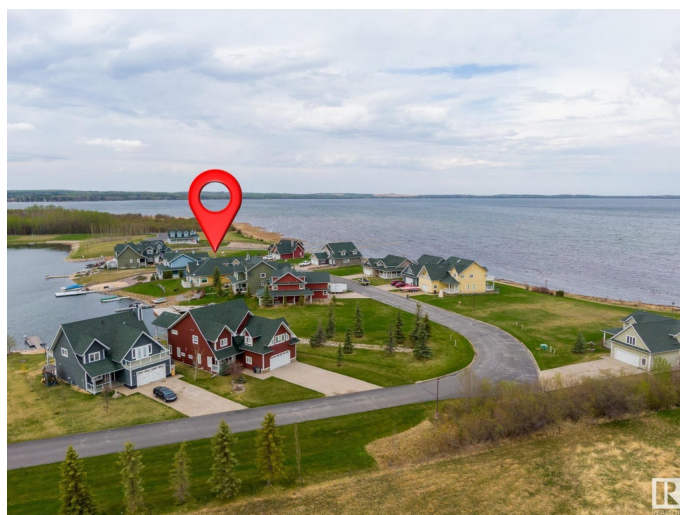
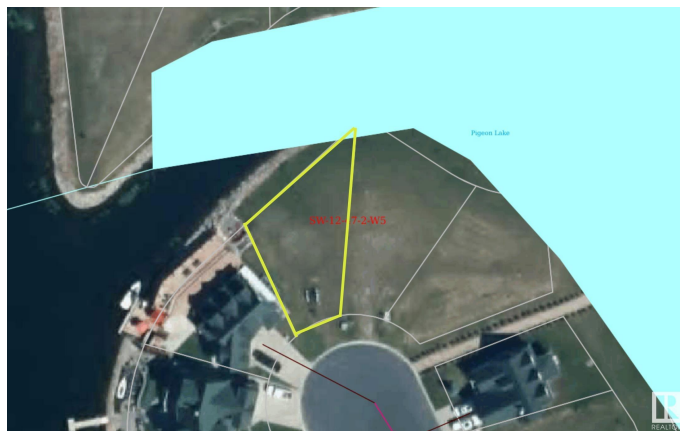
Sunset Harbour, Rural Wetaskiwin County, AB

PRIME lot available in the picturesque Sunset Harbour at Pigeon Lake- the perfect place to build your dream retreat! Experience refined living in this exclusive gated condo community. Includes harbour access with a private docking system, municipal water and sewer, paved streets, and full services to the property line. Designed with architectural standards of 1200 sq.ft. and up, this community blends seamlessly with the natural surroundings. Whether it's ice fishing, snowmobiling, cross country skiing in the winter, or golf, biking, boating, and fishing in the summer, there's something to enjoy year around! The Village is a short drive away and offers all the essential amenities, including a bank, restaurants, liquor and grocery store, even a spa. Imagine all the possibilities!

Essential Information

MLS® #	E4440585
Price	\$89,900
Bathrooms	0.00
Acres	0.16
Type	Rural
Sub-Type	Vacant Lot/Land
Status	Active

Community Information



Address	50 Sunset Harbour
Area	Rural Wetaskiwin County
Subdivision	Sunset Harbour
City	Rural Wetaskiwin County
County	ALBERTA
Province	AB
Postal Code	T0C 2V0

Exterior

Exterior Features	Backs Onto Lake, Beach Access, Boating, Cul-De-Sac, Flat Site, Gated Community, Golf Nearby, Lake Access Property, Lake View, Waterfront Property
-------------------	---

Additional Information

Date Listed	June 5th, 2025
Days on Market	57
Zoning	Zone 95
Condo Fee	\$350

DATA IS DEEMED RELIABLE BUT IS NOT GUARANTEED ACCURATE BY THE REALTORS® ASSOCIATION OF EDMONTON. COPYRIGHT 2025 BY THE REALTORS® ASSOCIATION OF EDMONTON. ALL RIGHTS RESERVED. Trademarks are owned or controlled by the Canadian Real Estate Association (CREA) and identify real estate professionals who are members of CREA (REALTOR®, REALTORS®) and/or the quality of services they provide (MLS®, Multiple Listing Service®)

Listing information last updated on August 1st, 2025 at 4:17am MDT