

Courtesy Of Connor A Honey Of RE/MAX Excellence

\$479,000 - 112 Heron Point Close, Rural Wetaskiwin County

MLS® #E4458196

\$479,000

2 Bedroom, 2.00 Bathroom, 1,170 sqft

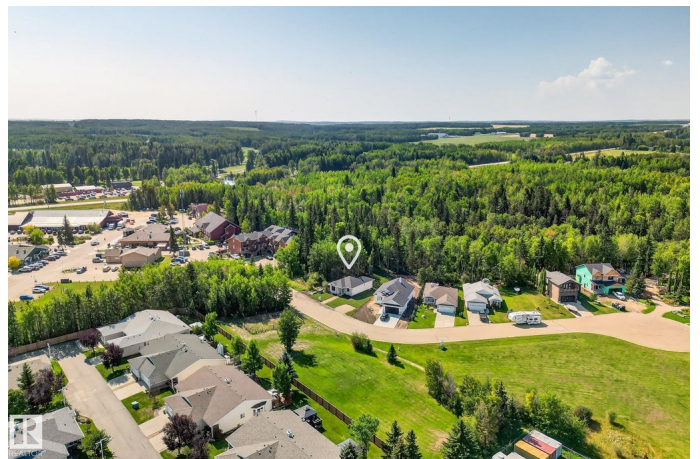
Rural on 0.16 Acres

Village at Pigeon Lake, Rural Wetaskiwin County, AB

This brand new fully landscaped 2025-built bungalow offers 1,169 sq ft on the main level plus a full 9â€™™ basement, connected to municipal sewer and Drilled well. Floor plan features 2 bedrooms and 2 bathrooms with 9â€™™ ceilings throughout. Exterior upgrades include Hardie Board and Eldorado Stone, an oversized fiberglass front door, and concrete steps. Inside, enjoy engineered hardwood flooring, triple pane windows, and a custom kitchen with Gem Cabinets, Aspen White quartz countertops, coffee bar, under-cabinet lighting, Kenmore stainless steel appliances, upgraded hood fan, and a White Blanco granite sink. The living room is highlighted by a matte black gas fireplace with custom metal railing. The primary suite includes a spa-inspired ensuite with 10mm glass shower door and Artisan Centre Pasta Blanca tile to the ceiling. Added features are an upgraded washer/dryer, 50-gallon HWT, HRV system, spray foam insulation, and MDF closet shelving. Outdoors, a deck with metal and glass railing overlooks the ravine.

Built in 2025

Essential Information



MLS® #	E4458196
Price	\$479,000
Bedrooms	2
Bathrooms	2.00
Full Baths	2
Square Footage	1,170
Acres	0.16
Year Built	2025
Type	Rural
Sub-Type	Detached Single Family
Style	Bungalow
Status	Active

Community Information

Address	112 Heron Point Close
Area	Rural Wetaskiwin County
Subdivision	Village at Pigeon Lake
City	Rural Wetaskiwin County
County	ALBERTA
Province	AB
Postal Code	T0C 2V0

Amenities

Features	Ceiling 9 ft., Hot Water Natural Gas, Insulation-Upgraded, No Animal Home, No Smoking Home, Vinyl Windows, Natural Gas BBQ Hookup, 9 ft. Basement Ceiling
----------	---

Interior

Interior Features	ensuite bathroom
Heating	Forced Air-1, Natural Gas
Fireplace	Yes
Stories	1
Has Basement	Yes
Basement	Full, Unfinished

Exterior

Exterior	Concrete
Exterior Features	Backs Onto Park/Trees, Boating, Environmental Reserve, Golf Nearby, Playground Nearby, Private Setting, Ravine View, Shopping Nearby

Construction	Concrete
Foundation	Concrete Perimeter

Additional Information

Date Listed	September 17th, 2025
Days on Market	1
Zoning	Zone 95

DATA IS DEEMED RELIABLE BUT IS NOT GUARANTEED ACCURATE BY THE REALTORS® ASSOCIATION OF EDMONTON. COPYRIGHT 2025 BY THE REALTORS® ASSOCIATION OF EDMONTON. ALL RIGHTS RESERVED.Trademarks are owned or controlled by the Canadian Real Estate Association (CREA) and identify real estate professionals who are members of CREA (REALTOR®, REALTORS®) and/or the quality of services they provide (MLS®, Multiple Listing Service®)

Listing information last updated on September 18th, 2025 at 5:02am MDT