

\$459,900 - 102 Lasalle Terrace W, Lethbridge

MLS® #A2204763

\$459,900

4 Bedroom, 3.00 Bathroom, 944 sqft

Residential on 0.10 Acres

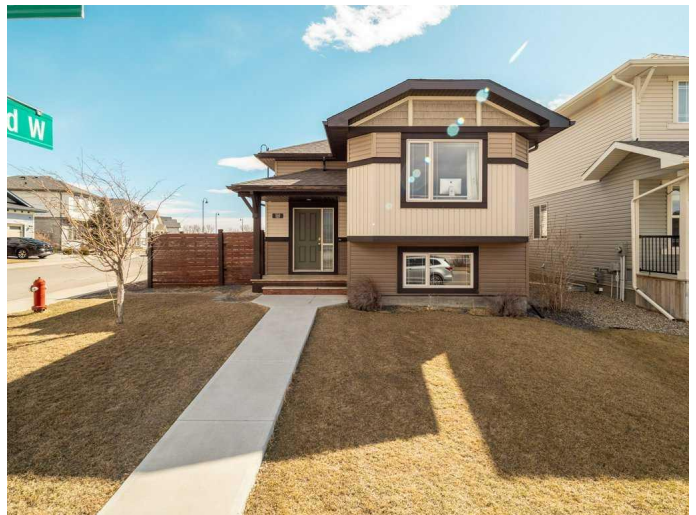
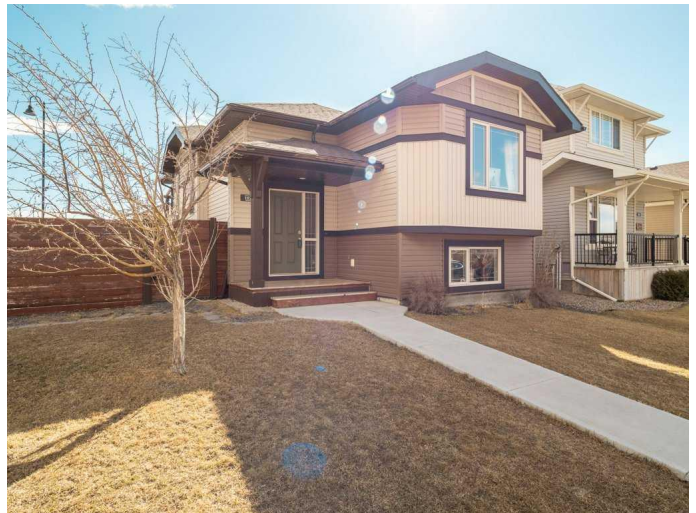
Garry Station, Lethbridge, Alberta

Discover the perfect blend of comfort and style in this stunning bi-level home, featuring 4 spacious bedrooms and 3 full bathrooms. Designed for both relaxation and entertaining, this home boasts a beautiful deck overlooking a private backyardâ€”ideal for summer gatherings. The primary bedroom offers the luxury of an ensuite and a double closet for added convenience. The bright and airy basement is filled with natural light, creating a warm and inviting space. Plus, the heated double detached garage ensures year-round comfort and storage. Also worth noticing that the flooring in the upstairs bedrooms and basement was upgraded in 2022 to a thick high quality laminate. This home is a must-seeâ€”add it to your list of favorites today!

Built in 2013

Essential Information

MLS® #	A2204763
Price	\$459,900
Bedrooms	4
Bathrooms	3.00
Full Baths	3
Square Footage	944
Acres	0.10
Year Built	2013
Type	Residential



Sub-Type	Detached
Style	Bi-Level
Status	Active

Community Information

Address	102 Lasalle Terrace W
Subdivision	Garry Station
City	Lethbridge
County	Lethbridge
Province	Alberta
Postal Code	T1J 5H1

Amenities

Parking Spaces	2
Parking	Double Garage Detached
# of Garages	2

Interior

Interior Features	Open Floorplan
Appliances	Dishwasher, Dryer, Microwave, Microwave Hood Fan, Washer, Freezer
Heating	Forced Air
Cooling	Central Air
Has Basement	Yes
Basement	Finished, Full

Exterior

Exterior Features	Private Yard
Lot Description	Back Lane, Back Yard, Corner Lot
Roof	Asphalt Shingle
Construction	Concrete, Vinyl Siding, Wood Frame
Foundation	Poured Concrete

Additional Information

Date Listed	March 25th, 2025
Days on Market	47
Zoning	R-CL

Listing Details

Listing Office	2 PERCENT REALTY
----------------	------------------

Data is supplied by Pillar 9â„¢ MLS® System. Pillar 9â„¢ is the owner of the copyright in its MLS® System. Data is deemed reliable but is not guaranteed accurate by Pillar 9â„¢. The trademarks MLS®, Multiple Listing Service® and the associated logos are owned by The Canadian Real Estate Association (CREA) and identify the quality of services provided by real estate professionals who are members of CREA. Used under license.