

# \$648,950 - 241 Chelsea Court, Chestermere

MLS® #A2216695

## \$648,950

3 Bedroom, 3.00 Bathroom, 1,853 sqft  
Residential on 0.08 Acres

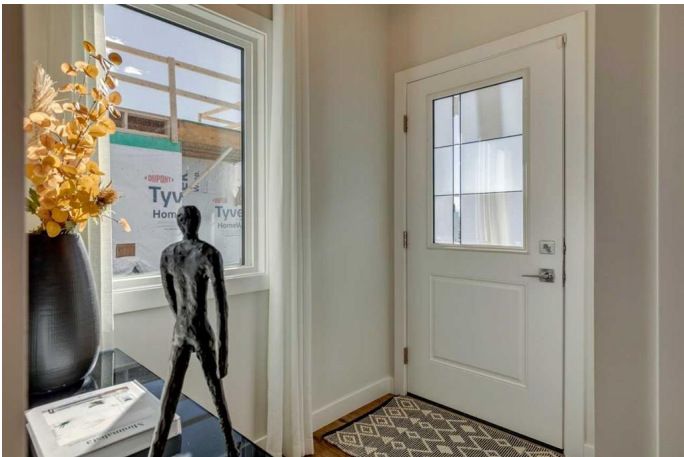
Chelsea\_CH, Chestermere, Alberta

Discover the Hogan 4 â€“ a stunning front garage duplex blending style and function. The gourmet kitchen features stainless steel appliances, a gas range, Silgranit sink, walk-through pantry, and sleek tile backsplash. Enjoy 9' basement ceilings, side entrance, and a spacious upper floor bonus room with vaulted ceiling. The primary bedroom boasts a W.I.C. and upgraded tiled ensuite shower. Modern finishes include paint-grade railing with iron spindles, LVP flooring throughout the main floor and wet areas, and an electric fireplace with a wall-to-wall tile face. Relax on the rear 9'-6"x11'-16" deck! Photos are a representative

Built in 2024

### Essential Information

MLS® #	A2216695
Price	\$648,950
Bedrooms	3
Bathrooms	3.00
Full Baths	2
Half Baths	1
Square Footage	1,853
Acres	0.08
Year Built	2024
Type	Residential
Sub-Type	Semi Detached
Style	2 Storey, Side by Side



Status Active

### Community Information

Address 241 Chelsea Court  
Subdivision Chelsea\_CH  
City Chestermere  
County Chestermere  
Province Alberta  
Postal Code T1X2Z4

### Amenities

Amenities None  
Parking Spaces 4  
Parking Double Garage Attached  
# of Garages 2

### Interior

Interior Features French Door, Kitchen Island, Open Floorplan, Pantry, Separate Entrance, Tankless Hot Water, Vaulted Ceiling(s), Walk-In Closet(s)  
Appliances Dishwasher, Gas Range, Microwave, Range Hood, Refrigerator, Tankless Water Heater  
Heating Forced Air, Natural Gas  
Cooling None  
Fireplace Yes  
# of Fireplaces 1  
Fireplaces Decorative, Electric  
Has Basement Yes  
Basement Full, Unfinished

### Exterior

Exterior Features Lighting  
Lot Description Back Yard  
Roof Asphalt Shingle  
Construction Stone, Vinyl Siding, Wood Frame  
Foundation Poured Concrete

### Additional Information

Date Listed May 1st, 2025  
Days on Market 8

Zoning	TBD
HOA Fees	200
HOA Fees Freq.	ANN

## Listing Details

Listing Office      Bode Platform Inc.

Data is supplied by Pillar 9â„¢ MLS® System. Pillar 9â„¢ is the owner of the copyright in its MLS® System. Data is deemed reliable but is not guaranteed accurate by Pillar 9â„¢. The trademarks MLS®, Multiple Listing Service® and the associated logos are owned by The Canadian Real Estate Association (CREA) and identify the quality of services provided by real estate professionals who are members of CREA. Used under license.